



# **Retrograde Migration of a Ventriculoperitoneal Shunt Followed by Scrotal Migration after Correction in the Same Infant with Triventricular Hydrocephalus: A Case Report and Review of the Literature**

**Fondop Joseph<sup>a</sup>, Atemken Tstatedem Fautin<sup>a</sup>,  
Dikongue Dikongue Alfred<sup>a</sup>,  
C. Atyam Ekoto Marie Christine<sup>b</sup>, Djam Ca<sup>a\*</sup>,  
Scavarda Didier<sup>c</sup> and Djientcheu Vincent De Paul<sup>d</sup>**

<sup>a</sup> *Faculte de Médecine et des Sciences Pharmaceutiques, Université de Dschang, Cameroon.*

<sup>b</sup> *Hopital Regional Annexe de Dschang, Cameroon.*

<sup>c</sup> *CHU Timone Enfant Marseille, Cameroon.*

<sup>d</sup> *Hôpital General de Yaounde, Cameroon.*

## **Authors' contributions**

*This work was carried out in collaboration among all authors. All authors read and approved the final manuscript.*

## **Article Information**

### **Open Peer Review History:**

This journal follows the Advanced Open Peer Review policy. Identity of the Reviewers, Editor(s) and additional Reviewers, peer review comments, different versions of the manuscript, comments of the editors, etc are available here: <https://www.sdiarticle5.com/review-history/98610>

**Case Report**

**Received: 22/02/2023**

**Accepted: 25/04/2023**

**Published: 03/05/2023**

\*Corresponding author: E-mail: [djamalain@gmail.com](mailto:djamalain@gmail.com);

## ABSTRACT

Hydrocephalus is a condition responsible for significant morbidity and mortality, and the most common surgical treatment is ventriculoperitoneal diversion with a drain, which can cause complications such as valve dysfunction, infection, peritoneal pseudocysts, and migration out of the peritoneal cavity. We report in this work a rare case of a newborn, delivered by caesarean section of a carrier of Human Infection Virus(HIV) infection, with congenital triventricular hydrocephalus, treated by ventriculoperitoneal shunt. The surgical course was marked by a retrograde migration followed by a migration into the left scrotum after repositioning the drain.

Ventriculoperitoneal shunt is a surgical treatment of hydrocephalus which appears technically simple, it requires a regular follow-up of the patient because of the complications which can occur, the examination of the drain path must be part of the monitoring factors.

*Keywords: Ventriculoperitoneal shunt; migration; retrograde; scrotal.*

## 1. INTRODUCTION

“Hydrocephalus results from distortion of the normal cerebrospinal fluid (CSF) dynamics, leading to its accumulation and ventricular dilatation” [1]. “The global prevalence of hydrocephalus (HC) in the pediatric population has been estimated in several studies to be approximately in 1 1000 births, with medium-to-low-income countries having a significantly higher incidence than high-income countries” [2].

“The main stay management of hydrocephalus is shunting with the goal of reducing intracranial pressures by diverting CSF to another compartment, most commonly into the peritoneal space. Other commonly used options include the pleural space and the right atrium” [1]. “Shunting and ventriculostomy are the two permanent treatment methods of CSF diversion” [1].

“Ventriculoperitoneal shunting has been utilized for more than 5 decades, and despite major advancements in valve design and catheters, complications and malfunctions occur relatively often. Ventriculoperitoneal shunts (VPS) are prone to problems such as infection, migration, occlusion, and pseudocyst formation, leading to shunt failure and hydrocephalus” [1].

“The migration of the distal VPS catheter outside the peritoneal cavity is rare with most cases reported in pediatric patients and an overall incidence ranging from 1.5 to 10%. 1,3 Distal shunt erosion into adjacent organs including the intestines, urinary bladder, scrotum, heart, and the abdominal wall is well” [3].

The clinical case we present is that of a 12 day old newborn with congenital triventricular hydrocephalus, treated by ventriculoperitoneal

shunt in whom the drain migrated backwards in a first stage, then migrated towards the left scrotum in a second stage after repositioning the drain.

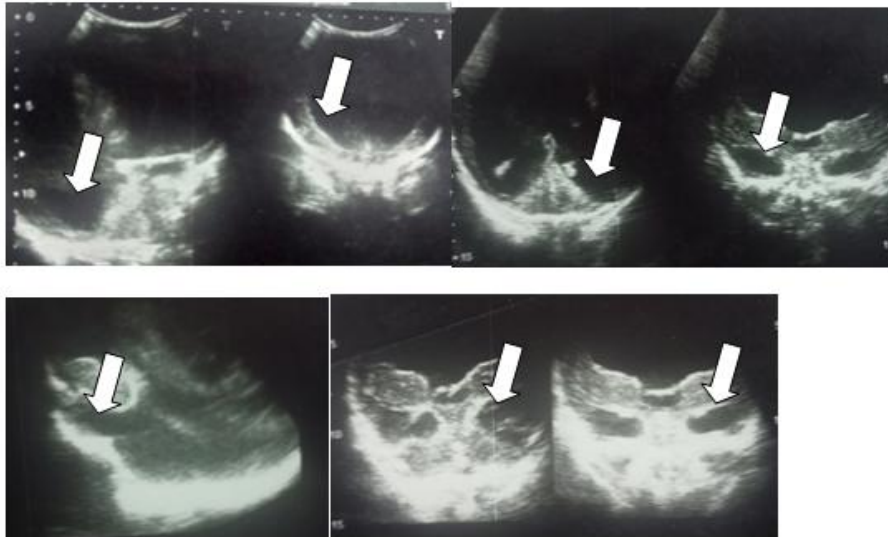
## 2. CLINICAL CASE

Male baby 12 days old, came to the clinic for macrocephaly, noted by the parents for 5 days. He is the first of 1 siblings born to a mother with HIV on (Anti Retro Virus) ARV, with positive Toxoplasmosis IgM serology, unwanted pregnancy, poorly monitored without any antenatal ultrasound, delivered by caesarean section with a birth weight of 4kg, head circumference (HC) 44cm, height 53cm.

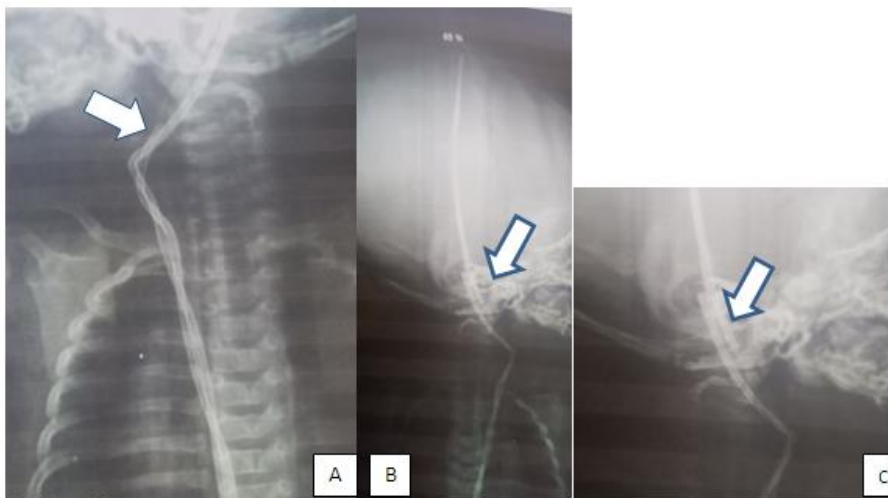
On physical examination: He is cachectic and presents a macrocephaly with HC: 43cm, weight 3kg, the anterior fontanel is bulging with disjunction of the sutures and the enlarged fontanel, he presents a turgidity of the subcutaneous veins and a Papineau sign making a diagnosis of hydrocephalus evoked.

A transfontanellar ultrasound is performed showing a major tri-ventricular hydrocephalus, (Fig. 1), the treatment by peritoneal ventricular deviation is performed.

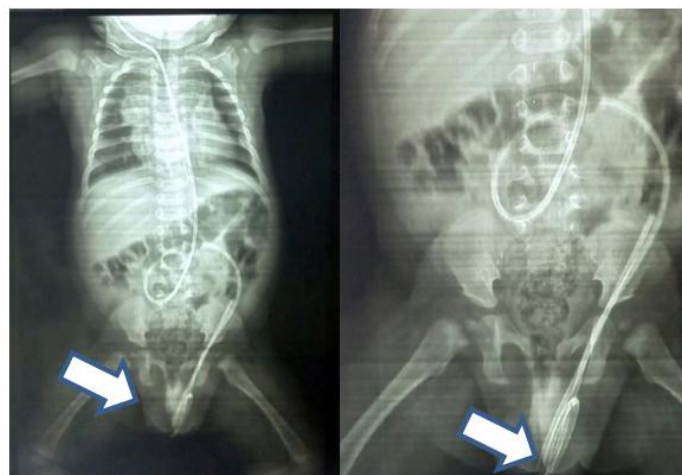
**At the age of 4 weeks, he was seen in consultation with a poor general state of health,** weight: 4kg HC: 47,5cm, Arm Circumference (AC): 10cm, Thoracic perimeter (T.P): 31cm. The Full Blood Count Shows microcytic hypochromic anaemia, 12.3g/l, White Blood cell 12500/mm, thrombocytopenia 79000/mm, Blood Group: A positive, coagulation check-Up normal and he is operated by ventricular-peritoneal shunt (VPS) at 1 week 3 days.



**Fig. 1. Transfrontanellar ultrasound showing a major tri-ventricular hydrocephalus**



**Fig. 2. Craniocervico thoracic (A face, B and C Profile) with the arrows showing retrograde shunt migration**



**Fig. 3. Cervical, thero-pelvic and abdominal X-ray showing left scrotal migration of the drain**

At 6 weeks 5 days, he returned to the appointment with a temperature of 37°C, a weight of 5.850 kg; HC: 48 cm; AC: 13cm, Frontal discreetly bulging with swelling of the drain path in the thoracic segment and difficulty palpating the drain in the distal abdominal segment of its path.

The craniocervical/thoracic radiograph shows a retrograde migration of the drain in its course and ITF showed a tri ventricular hydrocephalus with the intracranial drain (Fig. 2).

After a loss of sight, he was taken back for surgical repositioning of the drain at 4 months 3 weeks.

At 5 months of age he was seen in consultation with HC: 50cm; weight 7,98kg, normo-tensioned fontanel axial erection, no particular problem on physical examination.

**At 5 months 3 weeks**, he returned for consultation with left testicular swelling. The physical examination shows a HC at 50.3cm, weight: 8kg, a tumour and translumination of the left testicle with perception on palpation of the scrotal filiform structure very suggestive of a drain.

A cervicothoracoabdomino pelvic X-ray is performed showing a migration of the left intrasutural drain with hydrocele, (Fig. 3) a third surgical intervention is scheduled for repositioning of the drain, closure of the vaginal canal, and cure of the hydrocele, patient is lost from sight with a left hydrocele and a testicular drain.

### 3. DISCUSSION

“A ventriculoperitoneal shunt (VPS) is a medical device used to deflect cerebrospinal fluid from cerebral ventricles to the peritoneal cavity. Since 1908, ventriculoperitoneal shunts have been considered the best option in hydrocephalus management. Manifestation related to VPS may arise anywhere whilst tunneling the VPS from the ventricle to the peritoneal cavity, but complications associated with the distal catheter are especially common and a leading cause of revision surgeries” [4].

Migration may be broadly defined as “translocation of the part/whole of the shunt system (proximal/distal catheter/reservoir/valve) from the compartment where it was intended to

be to a new compartment which may be associated with/without shunt dysfunction. Shunt migration can be classified based on:

- A. Compartment of migration: total intracranial/subgaleal/breast/thorax/abdominal wall/hollow viscus/genitourinary.
- B. Direction of migration: cranial/caudal.
- C. The component of the shunt system that migrates: proximal catheter/distal catheter/valve/reservoir/entire shunt system [5].

“The Migration retrograde and of the distal end of the ventriculo peritoneal shunt and migration of VPS into the scrotum through patent processus vaginalis (PPV) on the same patient is a rare complication. The incidence of this complication it's not determine in the literature; some articles reported the incidence of migration of distal end of VP shunt to be from 1.4% [6] to 10%” [7,8].

“Catheter tip migration is known to occur due to the high degree of mobility within the peritoneal space. Perforation into the intestines, stomach, liver, thorax, heartsrotum, bladder, and vagina have been reported” [9].

“CSF shunting is commonly prenoted with large number of complications, shunt migration being one of them. It could be classified based on: the compartment of migration (total intracranial, subgaleal, breast, thorax, abdominal wall, hollow viscus, genitourinary), the direction of migration (cranial, caudal), the component” [10,11].

“The most frequent complication is shunt malfunction, which occurs in more than 50% of the children within 2 years after shunt surgery and at least 80% of lifetime risk”. (6,13): “Most of the VP shunt migration occurs during infancy and in the first six months after VP shunt implantation (time interval range 1day to 5 years)” [12].

Our patient had a retrograde or cranial migration, repositioned, and followed by a scrotal or caudal migration.

“Some authors note some factors may be postulated to be responsible for the migrations of the distal end of the VP shunt are: Intestinal peristalsis, Continuous water hammer effect of the pulsation of the CSF, Intermittent rise in the intra-abdominal pressure. Several theories have been proposed to account for the phenomenon of distal catheter migration into the subcutaneous

space. They can be grouped into two major categories: pulling (e.g., the windlass effect, abdominal fat pad shift, repeated head turning, etc.) and pushing (e.g., increased intraabdominal pressure, as may be found in obese patients)" [13-18].

"Some factors are described in the literature: some Host factors such as younger age, thin cortical mantle, malnutrition, excessive neck movements producing a windlass effect coupled with a large potential subgaleal space or dilated ventricles with negative suctioning pressure or a positive intraabdominal pressure, patient's habit of rubbing the chamber area has been considered in many studies" [11]. "Currently, the mechanism of distal shunt catheter migration into the subcutaneous tissues remains poorly understood" [14]. "These factors found in our patient, who is a new-born malnourished, allow us to understand the retrograde migration. Surgical factors such as inadvertently large burr hole, wide durotomy, and inadequate anchorage to the pericranial tissues have been postulated. A large burr hole with a large dural rent may result in a subgaleal pocket with enough CSF acting like a sump sucking the ventricular catheter into the subgaleal pocket Chabra's shunt which has a cylindrical chamber has been implicated. Short distance between the ventricular and abdominal end in young patients and rapid decompression of larger hydrocephalus are additional events" [11,19].

After repositioning the drain, it migrated into the left scrotum. Several hypotheses have been put forward in the literature to explain the scrotal migration: the theory of physiopathology is related to increased intraabdominal pressure due to CSF in the peritoneal cavity [20], Presence of a congenital hernial sac can be a predisposing factor for the migration of the VPS into the scrotum, Stiffness and length of catheter, age, and sex of the patient may also be culprit in the occurrence of this complications, Use of trocar for placing abdominal catheter is a blind procedure and also may be a causative factor [11,20]; In a study on 108 paediatrics cases with VPS the incidence of scrotal migration was found to be 3.7% [7]. "The processusvaginalis is an evagination of the peritoneal cavity through the inguinal canal, it forms during embryologic development in both sexes. In males, the testes migrate from the abdomen to the internal inguinal ligament during the 28 th week of gestation, and enter the scrotum by the 32 nd week of gestation. In females, the round ligament of the

uterus passes through the inguinal ligament and terminates in labia majora. A PPV persists when it fails to close. Patentprocessusvaginalis is present in 90% of males at birth, 50% at 1 years, 40% in childhood years and 15 to 30% in adulthood" [7,21]. This explanation is understandable in the case of our patient is the male and has Scrotal shunt migration and hydrocele at 5month 3 weeks probably because de processusvaginalis is an evagination not yet close.

#### 4. CONCLUSION

Retrograde migration and scrutum migration ventriculo peritoneal shunt to the same patent is rare but benign complication after a hydrocephalus surgicaltreatment by shunt. It is costly for poor families. It implies regular monitoring of patients after VPS. It is necessary to develop endoscopic surgery by ventriculoscopy to avoid complications related to foreign bodies, and especially in the case of drain migration; the neurosurgeon must examine regularly the patients operated with drains.

#### CONSENT

As per international standard or university standard, parental(s) written consent has been collected and preserved by the author(s).

#### ETHICAL APPROVAL

As per international standard or university standard written ethical approval has been collected and preserved by the author(s).

#### COMPETING INTERESTS

Authors have declared that no competing interests exist.

#### REFERENCES

1. HussamAbou-AI-Shaar, Arka N. Mallela ; Hanna N. Algattas , Rachel Rogers, Robert M. Friedlander . Ventriculoperitoneal shunt failure due to distal peritoneal catheter kinking. Am J Case Rep. 2022;23:e935077.
2. Nadia Mansoor, Ole Solheim, Oddrun A. Fredriksli, Sasha Gulati. Shunt complications and revisions in children: A retrospective single institution study, Brain Behav. 2021;11:e2390. Available:wileyonlinelibrary.com/journal/brb 3 1 pf1 of 8

3. Shashikanth R. Ambati, Suzanne Barry, Adamo A. Matthew, Mary Edwards. Transvaginal migration of ventriculoperitoneal shunts in children: review of literature. *Asian Journal of Neurosurgery*. 2022;17(3) ©:399-406.
4. Ismatullah Soufiany , Khalil Ahmad Hijrat, Spina Soufiany, Lukui Chen. Mechanisms and major sites of distal catheter migration in ventriculoperitoneal shunting maneuvers: A review article. *Brain Science Advances*. 2018;4(2):141–155.
5. Harischandra L S, Sharma A, Chatterjee S. Shunt migration in ventriculoperitoneal shunting: A comprehensive review of literature. *Neurol India*. 2019;67:85-99.
6. Ahmed AM Ezzat , Mohamed AR Soliman, Amr A. Hasanain<sup>1</sup>, Mohamed A. Thabit, Hesham Elshitany<sup>1</sup>, Haitham Kandel , Sameh H. Abdel-Bari, Ahmed MF Ghoul, Ahmed Abdullah, Mohamed FM Alsawy, Ammar A Ghaleb, Ahmed Al Menabbawy, Ahmed A. Marei, BassanteAbd El Razik, Henry WS Schroeder, Sascha Marx, Ahmed Zohdi, Ehab El Refaee, Migration of the distal catheter of ventriculoperitoneal shunts in pediatric age group: Case Series. *World Neurosurgery*. 2018;119:e131-e137.
7. Mahmoud M. Taha, MD, PHD, Hassan A. Almenshawy, MD, Mohamed Kh. Elbadawy, MD. Migration of distal end of VP shunt into the scrotum: a management review. *Surg J (N Y)*. 2022;8(3):e245-e248. Published online 2022 Sep 2. DOI: 10.1055/s-0042-1756181
8. Balasubramanyam Shankar, Ramakrishna Narayanan, Samir Mustafa Paruthikunnan, Chaitanya Dattatray Kulkarni, Scrotal migration of ventriculoperitoneal shunt. *BMJ Case Rep*; 2014. DOI:10.1136/bcr-2014-204404
9. Yang Benson P, Yang, Carina W, Mindea, Stefan A, Alden, Tord D. Reduplication of ventriculoperitoneal shunt catheter tip back through shunt tract pediatric neurosurgery preview publication details. *Basel*. N° 3. 2005;41:168-9.
10. Ram Chandra Deo, Abhijit Acharya, Satya Bhusan Senapati, Souvagya Panigrahi, Ashok Kumar Mohapatra. Complete intraventricular migration of ventriculoperitoneal shunt: A rare case report. *International Journal of Surgery Case Reports*. 2022;101:10777.
11. Ashish Chugh, Sarang Gotecha, Gaurav Amle, Anil Patil, Prashant Punia, Megha Kotecha. Abnormal migration and extrusion of abdominal end of ventriculoperitoneal shunt: An experience of eight cases, original articles. *Journal of Pediatric Neurosciences*. 2018;13(3):317-321.
12. Afshin Mohammadi, Abbas Hedayatiasl, Mohammad Ghasemi-rad. Scrotal migration of a ventriculoperitoneal shunt: a case report and review of literature. *Medical Ultrasonography*. 2012;14(2):158-160.
13. J Roth, B Sagie, A Szold, H Elran. Laparoscopic versus nonlaparoscopic-assisted ventriculoperitoneal shunt placement in adults. A retrospective analysis. *Surgical Neurology*. 2007;68(2):177-184.
14. Christopher Lee, Lucinda Chiu, Pawan Mathew, Gabrielle Luiselli, Charles Ogagan, Rrita Daci, Brittany Owusu-Adjei, Rona S. Carroll, Mark D. Johnson. Evidence for increased intraabdominal pressure as a cause of recurrent migration of the distal catheter of a ventriculoperitoneal shunt: illustrative case. *J Neurosurg Case Lessons*. CASE2032, 2021;1(3). DOI: 10.3171/CASE2032
15. Morrison JF, Sung KE, Bergman AM, et al. A novel solution to reduce the complications of distal shunt catheter displacement associated with obesity. *J Neurosurg*. 2010;113(6):1314–1316.
16. Heim RC, Kaufman BA, Park TS. Complete migration of peritoneal shunt tubing to the scalp. *Childs Nerv Syst*. 1994;10(6):399–400.
17. Scott M, Wycis HT, Murtagh F, et al. Observations on ventricular and lumbar subarachnoid peritoneal shunts in hydrocephalus in infants. *J Neurosurg*. 1955;12(2):165–175.
18. Eljamel MS, Sharif S, Pidgeon CN. Total intraventricular migration of unisystemventriculo-peritoneal shunt. *Acta Neurochir (Wien)*. 1995;136(3-4):217–218.
19. Huliyyappa HA, Jaiswal M, Singh SK, Ojha B, Chandra A, Chhitij S. Retrograde partial migration of ventriculoperitoneal shunt with chamber: review of causative factors and its prevention. *Journal of Pediatric Neurosciences*. 2017;12(1):93-95. Available: <https://doi.org/10.4103/1817-1745.205654>

20. Ferreira Furtado L, Da Costa Val Filho J, Moreira Faleiro R, et al. Abdominal complications related to ventriculoperitoneal shunt placement: a comprehensive review of literature. Cureus 2021;13(2):e13230. DOI 10.7759/cureus.13230
21. Marsha J. Crofford, Dvoral Balsam. Scrotal migration of ventriculoperitoneal shunts. American Journal of Roentgenology. 1983; 141:369-371. 10.2214/ajr.141.2.369,Read More: <https://www.ajronline.org/doi/abs/10.2214/ajr.141.2.369>

© 2023 Joseph et al.; This is an Open Access article distributed under the terms of the Creative Commons Attribution License (<http://creativecommons.org/licenses/by/4.0>), which permits unrestricted use, distribution, and reproduction in any medium, provided the original work is properly cited.

*Peer-review history:*

*The peer review history for this paper can be accessed here:*

*<https://www.sdiarticle5.com/review-history/98610>*